



**MARCH 9-25, 2018**



## NEW ZEALAND & AUSTRALIA: ACTIVITIES AND SIGHTSEEING TOUR

### LAND TOUR:

**Part 1: New Zealand: Auckland,  
Christchurch and Queenstown**

**Part 2: Sydney and Melbourne**

See next page for full itinerary.

Trip Cost: \$2999

Lodging: DOUBLE OCCUPANCY

Deposit: \$500 (nonrefundable) - Due by Oct. 31 2017. Final payment due 60 days before trip. Payments send in after the due date, add at least 10% depending on lodging availability and adjustment. Please read cancellation policy on last page.  
Single Supplement: \$1000

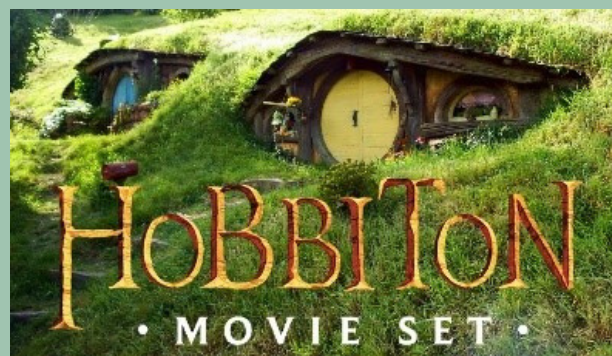
#### INCLUDES:

- Lodging at hotels (3 to 4.5 stars) with double occupancy rooms.
- Transportation on comfortable vehicles between cities.
- Some breakfasts
- Travel insurance
- Australia Visa

#### NOT INCLUDED:

- Airfare (International & Domestic Flights) ~\$1500-\$2000 (not final until booking)
- Meals are not specified in the itinerary and services tips.
- Optional activities
- Additional charges for single occupancy rooms

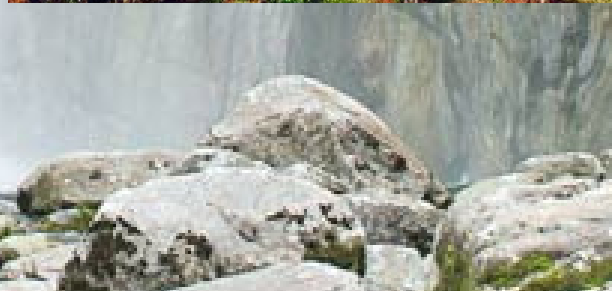
\*\*\*Allow \$300 to \$1000+ of your budget for meals, optional activities and personal expenses/gifts\*\*\*



# Itinerary

*Friday, March 9 – Sunday, March 25*

- Day 1: LAX (Fri. night, Sat. morning) On Air-12 hours nonstop flight (17 hours one stop flight)
- Days 2 - 4: Sun. Mar 11 to Tues. Mar 13-Auckland transfer to Taupo (overnight in Auckland). Day 2-3- sightseeing and hiking: Mt Victoria, downtown Auckland historical landmarks, etc.; Day 3 afternoon- transfer to Cooks Beach visiting Cathedral Cove at sunset (overnight in Cooks Beach); Day 4- visiting Mt Maunganui, Wairere Falls Track, Hobbiton Movie Set, Rotorua Lake, Hot Spring, Volcano, Geyser, Wai-O-Tapu Thermal Wonderland (Overnights in Taupo-3 nights)
- Days 5 - 6 (Wed. to Thurs.): hiking and sightseeing Tongariro National Park and Tongariro Alpine Crossing (partial)/ Tawhai Falls
- Days 7 - 8 (Fri. to Sat.): Wellington to Christchurch (via air). Christchurch Waterfalls and Church of the Good of Shepherd. Aokaki Mt Cook National Park and Lakes: Tekapo, Pukaki and Wanaka. Two nights near Pukaki Lake/Aokaki Mt Cook National Park
- Days 9 - 10 (Sun. to Mon.): (overnight in Queenstown) short hikes and sightseeing: Milford Sound: Kayaking, Rafting, Walking, Fiordland National Park and Milford Track short hikes
- Days 11, 12 & 13 (Tues. to Thurs.): (three nights in Sydney) Sydney Destinations
- Days 14 & 15 (Fri. to Sat.) - take a flight to Melbourne from Sydney (two nights in Melbourne) Melbourne and Surrounds, Melbourne Farmhouse
- Day 16 (Sun.): leaving Melbourne to LAX afternoon







# CANCELLATION POLICY

## CANCELLATION OF SERVICES

59-46 DAYS  
PRIOR TO ARRIVAL  
DATE:  
50%  
OF THE TRIP AMOUNT  
IS SUBJECT TO  
FORFEITURE.

45 DAYS  
PRIOR TO ARRIVAL  
DATE:  
100%  
OF THE TRIP  
AMOUNT IS SUBJECT  
TO FORFEITURE.



Please contact ANP Tourism with any  
questions or concerns.